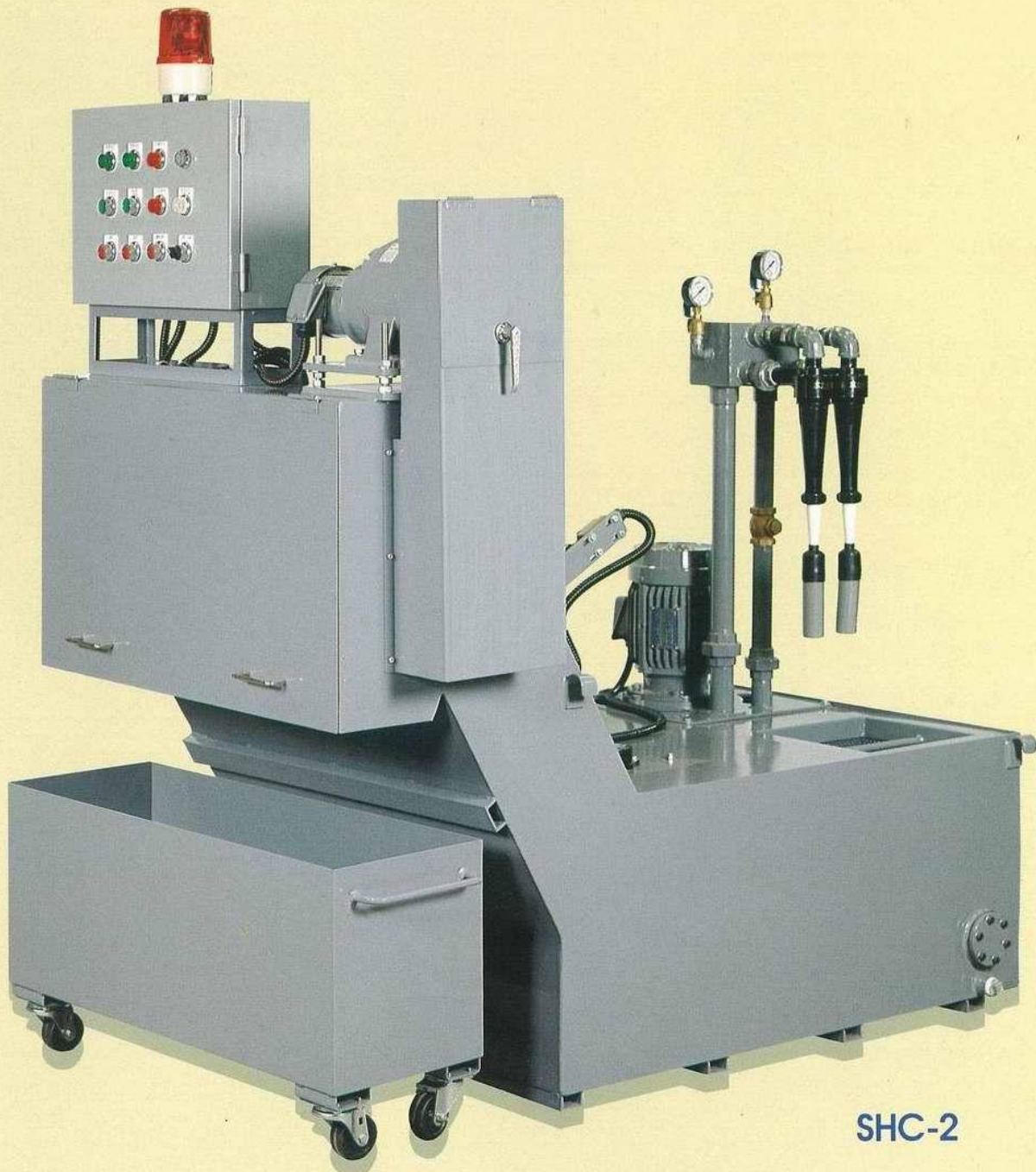




UNI MAGNETIC

SCRAP TYPE SEPARATOR COOLANT FILTER



SHC-2



A
There is an oil level sensor in electric box with function to alarm and light up warning lamp at low oil level.



B
A torque limiter is provided to slip in the event of overload or blockage so as to protect motor and feed chain.



SCRAP TYPE SEPARATOR

GRINDING/CUTTING Coolant Filter

FEATURES:

1. Eliminating impurities from bucket bottom with a scraper to prevent that sediments accumulation and cleaning work for bucket.
2. Hydrocyclone sucks waste water to get rid of impurities through eccentricity and supplies clean water for machine.
3. applicable to both cutting and grinding condition.



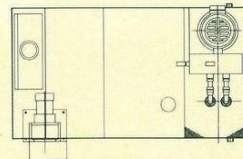
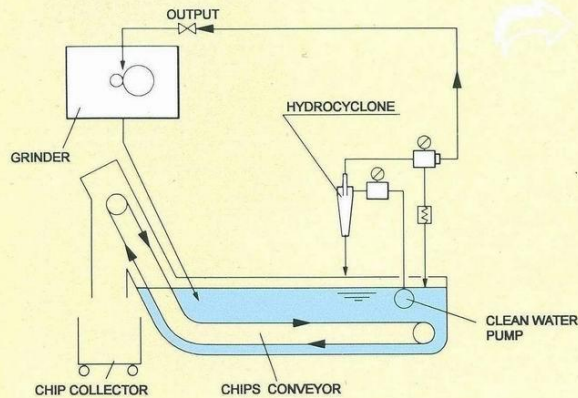
C
The main function of Hydrocyclone is to deliver clean coolant filtered under an accuracy of 20μ.



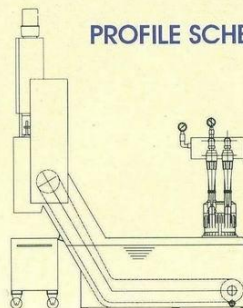
D
Limit switch is used to detect slip of torque limiter give alarm and light up warning lamp, reminding operator to keep out of failures.

SCRAP TYPE SEPARATOR

STANDARD MODEL SCHEME



PROFILE SCHEME



Description for Extension Application

- Available for mounting timer to control scraper running with intervals so as to reduce water volume of iron chips.
- Recommended for fixing magnetic plate on bucket bottom to speed precipitation of chips.
- Able to be equipped with refrigerator or cooling tower to control temperature of coolant.
- Available for mounting magnetic separator for rough chip filtration discharge.
- Suitable for installing centrifuge separator and high bucket to upgrade filtration accuracy to 10-5μ, also applicable to oil.

★ SPECIFICATIONS OF SCRAP TYPE SEPARATOR

MODEL	DISPOAL VOLUME	BUCKET CAPACITY	HYDROCYCLONE MOTOR	SCRAP TYPE SEPARATOR MOTOR	OVERALL LENGTH	OVERALL WIDTH	OVERALL HEIGHT	SEWAGE INLET HEIGHT	BUCKET WIDTH	COOLANT OUTLET DIAMETER
SHC-1	70 ℓ/min	280	1.5 kw	0.1 kw	1160	1120	1880	525	900	PT 1 1/4"
SHC-2	140 ℓ/min	430	1.5 kw	0.1 kw	1500	1120	1880	525	900	PT 1 1/4"
SHC-3	210 ℓ/min	630	2.2 kw	0.1 kw	2000	1120	1880	525	900	PT 1 1/2"
SHC-4	280 ℓ/min	840	2.2 kw	0.1 kw	2500	1120	1880	525	900	PT 1 1/2"

NOTES

1. Special specifications are available.
2. Voltage other than 220V 3PH 60Hz should be specified upon ordering.
3. Hydrocyclone is only applicable to water soluble coolant. Further information for oil shall be offered upon request.